

# User Manual

## Intelligent Remote Control Bait Boat



### Saber S series

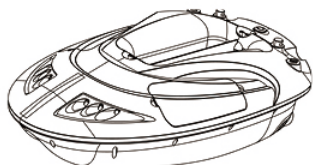
Please read this instruction carefully before using the product and keep it well

*Live an intelligent life; Enjoy the fun of fishing.*

# Contents

<b>1.Product Composition</b> .....	3	5.1.2 Deletion of GPS location points .....	8
1.1Package content .....	3	5.1.3 GPS location point navigation .....	8
1.2 Component introduction .....	3	5.2 Compass calibration .....	9
1.2.1Hull Introduction .....	3	5.3 Rocker calibration .....	9
1.2.2 Remote Control Introduction .....	3	5.4 Boat Control Channel Matching .....	9
1.2.3 Introduction to the operation interface .....	5	5.5 Sonar Channel Matching .....	9
1.2.3.1 Home page .....	5	5.6 Bait hopper operation .....	9
1.2.3.2 Navigation page .....	6	5.7 Hook operation .....	9
1.2.4 Multi-function power adapter: .....	6	<b>6.Security measures</b> .....	10
<b>2.Main features of the product</b> .....	7	6.1 Automatic return in low-power situation .....	10
<b>3.Product type classification</b> .....	7	6.2 Automatic return with no signal .....	10
<b>4.Basic operation</b> .....	7	6.3 Circuit protection measures .....	10
4.1 Operation to prepare .....	7	<b>7. Fish Finder</b> .....	11
4.2 Compass Calibration .....	7	7.1 How Sonar Works .....	11
4.3 Set the starting point .....	7	7.2 Display View .....	11
4.4 Automatic cruising .....	7	7.3 How to set up sonar menu .....	11
<b>5.Special operation</b> .....	8	<b>8.Precautions</b> .....	13
5.1 Navigation page operation .....	8	<b>9.Troubleshoot common faults;</b> .....	13
5.1.1 Navigation page operation .....	8	<b>10.Technical Indicators of Products</b> .....	14

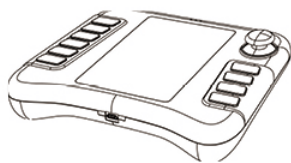
## Product composition/Package content



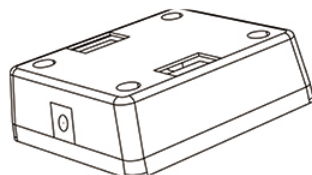
Boat × 1



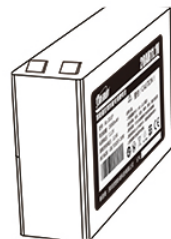
boat handle × 1



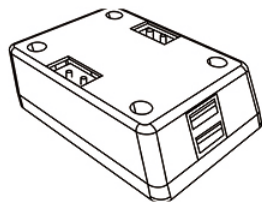
remote control × 1



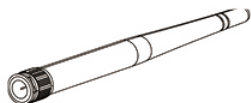
instructions × 1



boat's battery × 2



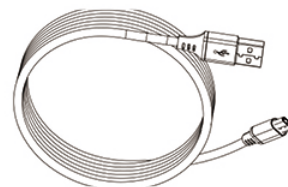
multi-function power  
adapter × 1



antenna × 3



charger × 1



remote control charging  
cable (type-c) × 1



Screw for fixing  
handle × 4

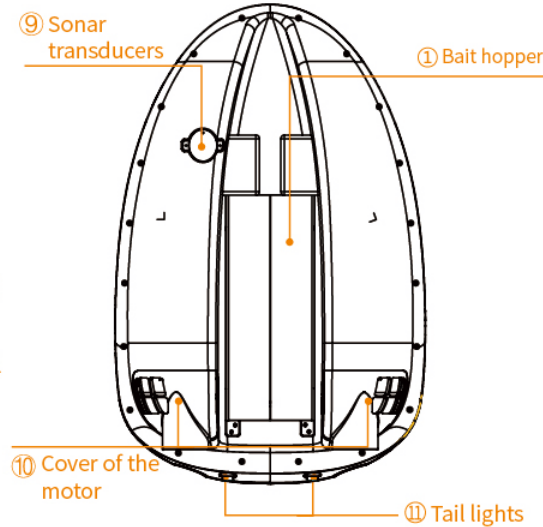
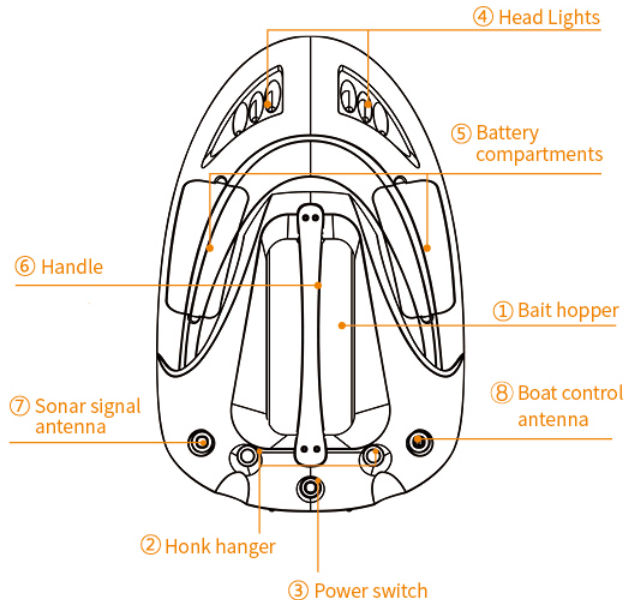
# 1.Product composition

## 1.Package content

Boat × 1, boat handle × 1, remote control × 1, instructions × 1, boat power battery × 2 , multi-function power adapter × 1, antenna × 3, charger × 1, remote control charging cable (type-c) × 1

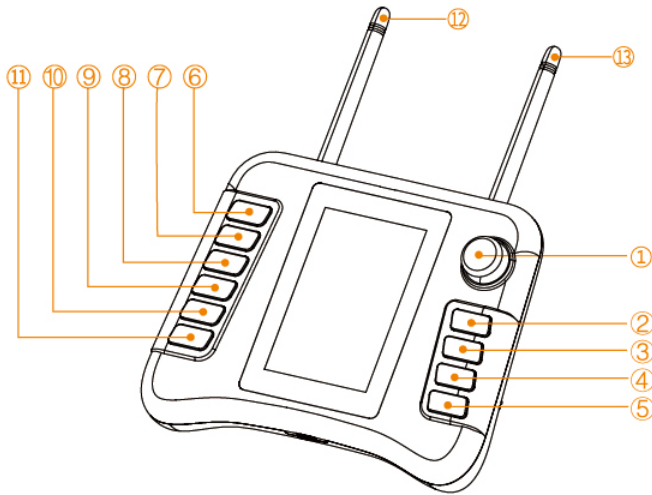
## 2.Component introduction

### 1)Hull introduction



- 1.Bait hopper
- 2.Honk hanger
- 3.Power switch
- 4.Head Lights
- 5.Battery compartments
- 6.Handle
- 7.Sonar signal antenna
- 8.Boat control antenna
- 9.Sonar transducers
- 10.Cover of the motor
11. Tail lights

## 2) Remote Control



**1)Rocker:** In the home page, it serves as the boat direction control button for manual driving; in the navigation page and setting page, it serves as the selected direction key, the center point pressing is the confirmation button;

**2)On/Off:** Press and hold the power on, then press and hold the power off; short press as the return button to return to the main interface;

**3)Setting button:** Press to enter the setting menu, and then press the setting button, you can take turns to select in the three setting tabs in the setting menu;

**4)Boat speed adjustment button:** boat speed adjustment button, the default boat speed is the standard speed, short press this button, the boat speed switches between "standard", "high speed" and "low speed";

**5) Lights button:** turn on the LED lights before and after the boat, and the backlight of the remote control.Double click "light" button, then close the alarm sound, double click it again, then restore the alarm sound;

**6) Bait Release button:** single press to open the left bait hopper door; double press to open the right bait hopper door. The door automatically closes the reset after 8 seconds.

**7) Hook hanger button:** single press to open the left hook, double press to open the right hook; 1 second after the hook automatically reset;

**8) Fish Finder button:** press the full screen to display the fish interface; press again to return to the main interface;

**9) Navigation page button:** Press this button to enter the navigation page, and then press this button to return to the main interface;

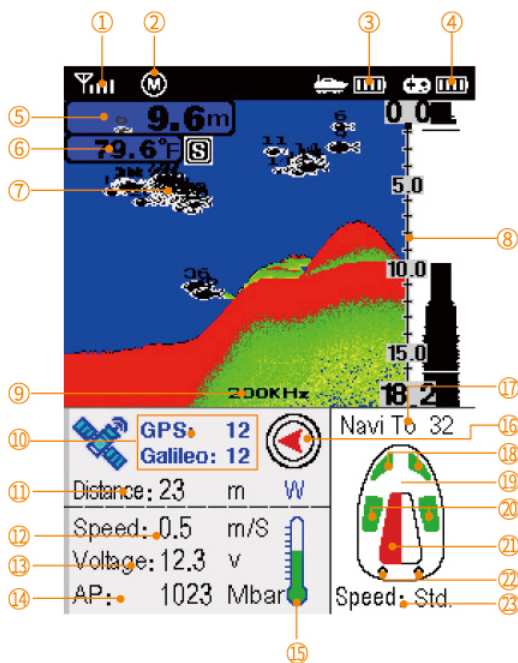
**10) Go button:** On the navigation page, select an already stored point icon, press the "Go" button, then the boat navigates from the current position to the target point; press this button in the navigation state to exit the navigation mode;

**11) Autopilot button:** automatically straight along the current boat head direction, press the button again to exit the automatic driving mode.In the navigation state, press this button end the navigation;

**12) Boat control antenna:**An antenna that transmits control signals from boat  
**13) Sonar signal antenna:**An antenna that wirelessly transmits sonar data from fish Finder

# Introduction to the operation interface

## Home page



**1. Wireless connection signal:** indicates the strength of the wireless communication signal between the boat and the remote controller;

**2. Current operation mode:** There are three operation modes, automatic driving, navigation driving, manual driving; and is consistent with the content of the 17th page;

**3. Boat Battery level icon**

**4. Remote control battery level icon.**

**5. Water depth:** the unit can be adjusted to meters or feet in the setup menu.

**6. Water temperature:** The unit can be set to Celsius or Fahrenheit in the setup menu.

**7. Fish icon:** There are three fish-shaped icons, which indicate the size of fish; large, medium and small fish;

**8. Water depth gauge:** the depth gauge of the water, automatically switches the scale according to the current water depth;

**9. Current sonar frequency used:** can switch between 83KHz and 200KHz;

**10. The number of satellites searched:** The number of satellites searched and locked, showing the number of GPS search stars and the number of Glonass Search satellite;

**11. Distance:** In manual or automatic mode, the distance from the starting point is displayed; in the navigation mode, the distance from the target point is displayed;

**12. Boat speed:** the current speed of the boat, in meters per second;

**13. Boat battery voltage:** display the voltage of the boat battery, the working voltage is between 11.1V-12.6V, lower than 11.1V is the low battery state, it is recommended to charge and then use;

**14. Atmospheric pressure value:** displays the current atmospheric pressure value;

**15. Barometer display:** below 990 mbar display, between 990-1053 mbar display, higher than 1053 mbar display

**16. Boat head direction:** display the direction of the current boat head;

**17. Operation mode:** There are three operation modes, automatic driving, manual driving, and navigation to the target point;

**18. Light Status:** white is the light is off, black is the light is on;

**19. Boat speed indication:** indicates low speed, indicating standard, indicating high speed;

**20. Battery status:** The battery has power, indicating that the battery is low;

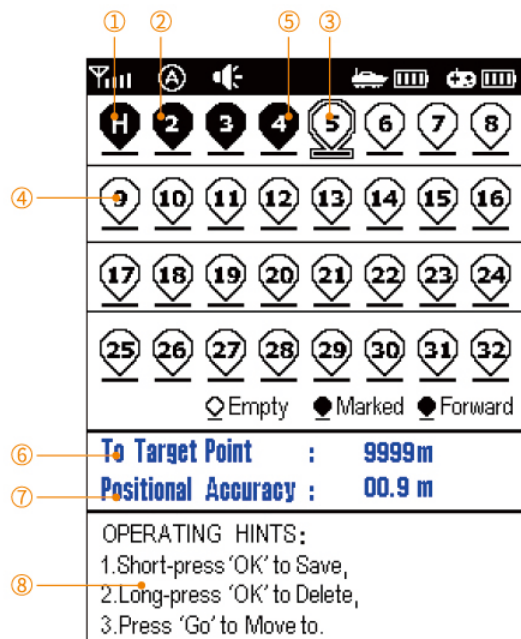
**21. Bait hopper status:** white means off, red means bait hopper work (on);

**22. Hooker status:** white means closed, Red means hook open;

**23. Boat Speed:** The text here shows the speed mode of the boat.

# Introduction to the operation interface

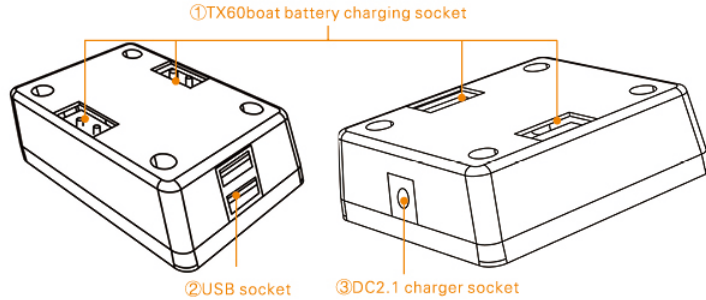
## Navigation page



- 1. Home point:** H point is used to set the departure point. After the first launch, set the starting point first. After the automatic returning from low battery, no signal to return automatically or want to automatically navigate back, you need to set the starting point information to work normally.
- 2. Stored point:** black indicates that the current location has stored location information;
- 3. Select the point:** the box selection point indicates that the selection box is at this point;
- 4. Unstored points:** white indicates that location information is not stored at this point;
- 5. Heading to the point:** flashing black indicates that the navigation is progressing to this point;
- 6. Distance:** If it is manual or automatic, it will display the distance from the starting point. If it is navigation, it will display the distance from the target point; if "--" is displayed, it means the satellite is not positioned;
- 7. Positioning accuracy:** display the positioning accuracy of the dual-mode satellite system;
- 8. Operation icon:** display the meaning of the icons of each point;



Multi-function power adapter



**1.TX60boat battery charging socket:** connect the boat battery charging cable;

**2.USB socket:** 2 standard 5V DC USB interfaces, which can be output to the mobile phone and other devices for charging;

**3.DC2.1 charger socket:** connect the power charger;

## 2.Main features of the product

- 1) Adopting Full digital duplex two-way wireless remote control, the remote control distance is 500 meters;
- 2) The remote control adopts a 3.5-inch 320\*240 daylight visible half-reverse half-transparent screen imported from Japan;
- 3) The all-in-one remote control integrates a multi-mode satellite positioning system to support GPS, Beidou, Galileo, and GLONASS multi-mode satellite positioning;
- 4) It can store 32 position point information and realize automatic navigation between various position points;
- 5) The all-in-one remote control integrates a sonar fish finder to monitor water temperature, water depth, fish size, location, water grass and riverbed structure in real time;
- 6) Integrated with a barometer, the pressure change can be observed at any time;
- 7) There is a security protection system, when the boat is low or the signal is weak, it can automatically navigate back to the starting point;
- 8) The boat adopts a double-body boat design with a bait load of 3Kg and two hook devices at the tail of the boat;
- 9) The remote control can display the working status of each part of the boat;

## 3.Product type classification

This product is mainly divided into four models

Product model	S3 Fish Finder Edition	S5 Advanced Edition
Electronic compass	✓	✓
Dual-mode satellite positioning and navigation	---	✓
Dual frequency sonar for fish finder	✓	✓
RC with Black and white screen	---	---
RC with Color liquid crystal display screen	✓	✓



## 4. Basic operation

**1.Operation to prepare:** Load the boat battery into the two battery compartments of the boat, first turn on the power switch of the remote control, then turn on the power switch of the boat, check whether the wireless communication icon on the remote control is normal, and dial the Rocker to check whether the boat body propeller rotates;

**2.Compass Calibration:** Put the boat into the water and toggle the Rocker to make the boat 2-3 meters away from the shore. For the first time, please calibrate the boat's compass. For the calibration method, see 4-2 **“Compass Calibration”** ;

**3. Set the starting point:** Press the **“Navigation”** button on the remote control to enter the navigation page to check the positioning accuracy. When the positioning accuracy display value is less than 2 meters (the smaller the positioning accuracy value is, the higher the positioning accuracy is), then select the **“H”** point and press the menu. Rocker's confirmation button makes the **"H"** point icon black and stored, and the starting point is successfully set;

**Note:** ⓘ For safety and ease of operation, please be sure to set the departure point first;

**4. Automatic cruising:** You can make the boat travel straight along the direction of the boat head by pressing the **“automatic travel”** button. You can adjust the direction of travel by controlling the Rocker during driving.

## 5.Special operation

### 1. Navigation page operation

#### 1) Save of GPS location points

If you want to save the current boat location, press the **“Navigation”** button on the main page to enter the navigation page, move the Rocker to select a point icon you want to save, and press the Rocker confirmation button. The icon changes from white to black , indicating that the location information has been stored;

#### 2) Deletion of GPS location points

On the navigation page, select the point icon to be deleted, and long press the Rocker's confirmation button. When the point icon changes from black to white, it means that the point information has been deleted.

#### 3) GPS location point navigation

On the navigation page, select the point icon you want to go to, and then press the **“Go”** button. The point icon changes from black to flashing, indicating that the boat is navigating toward the target point;

### 2. Compass calibration

Click the Settings button to enter the settings page, select **"Compass Calibration"**, then the boat starts to rotate in the water. At this time, the electronic compass in the boat starts to calibrate, and the calibration is completed, and the main interface is automatically returned.

**Note:** ⓘ Only under the circumstance of the first use of the bail boat, or the boat has not been used for a long time, or found that the direction of the boat is not accurate need to generate compass calibration, other times do not need to be calibrated.

### 3.Rocker calibration

Click the Settings button to enter the settings page, select **“Rocker Calibration”** , then the Rocker will perform the center point calibration first. At this time, do not

move the Rocker; then the Rocker will perform the maximum calibration. At this time, the Rocker will be remotely controlled by the Rocker in the maximum range clockwise. Maximum calibration, return to the main interface after calibration.

**Note:** ⓘ This operation is not required in normal situations. Rocker calibration is required only after the Rocker is pointed to inaccurate direction. If the Rocker cannot be operated effectively after the wrong Rocker calibration, you need to restart the remote controller, and then press the Rocker's OK button for 8 seconds on the main interface to reset the Rocker.

#### 4. Boat Control Channel Pairing

First turn off the power of the boat, then press the **"Settings"** button on the remote control to enter the setting page, select one channel in the **"Boat channel"** setting, and when the **"Channel is Setting"** interface appears on the screen, turn on the boat power again. At this time, the boat and the remote control automatically perform channel pairing. . After the channel is successfully paired, the screen displays **"Channel Pairing Successfully"** and then automatically returns to the main interface; if the pairing fails, please follow the above steps to do it again;

**Note:** ⓘ The channel has been successfully paired between the remote control and the boat at the factory. It is only necessary to re-match the channel when there is no communication between the remote control and the boat, or if there is similar frequency signal interference in the vicinity of the operation.

#### 5. Sonar Channel Pairing

First turn off the power of the boat, then press the **"Settings"** button on the remote control to enter the setting page, select one channel in the **"Sonar channel"** setting, and when the **"Channel is Setting"** interface appears on the screen, turn on the boat power again. At this time, the boat and the remote control automatically perform channel Pairing. . After the channel is successfully paired,, the screen displays **"Channel Pairing Successfully"** and then automatically returns to the main interface; if the matching fails, please follow the above steps

to do it again;

**Note:** ⓘ The channel has been successfully paired between the remote control and the boat at the factory. It is only necessary to re-match the channel when there is no communication between the remote control and the boat, or if there is similar frequency signal interference in the vicinity of the operation.

#### 6. Bait hopper operation

Press the **"bait barn"** button once, the left side of the hooper is opened; press the **"bait barn"** button twice in succession, then the right side of the hooper is opened; in the above operation, the corresponding position of the hooper can be seen in the status bar of the remote control boat body. State; bait hopper automatically closed after 8 seconds of opening;

**Note:** ⓘ The default of bait hopper is single open. If you want to change to double open, select **"double open"** in the **"opening mode"** of the setup menu. If the open position is double open, press single. "Bucket" button, the left and right positions are opened at the same time; the bait hopper automatically closes after 8 seconds of opening;

#### 7. Hook operation

If you press the **"hook"** button only, the left hook opens, and if you press the **"hook"** button twice in a row, the right hook opens. The corresponding state of the hook can be seen in the hull status bar of the remote control.

#### 8. Left and right motor output adjustment

We can adjust the ratio of the output power of the left and right motors in the Settings to adjust the attitude of the boat. Normally, we don't need to make any adjustments. When we find that the boat moves to the right at any time, it means that the speed of the motor on the left of the boat is higher than that on the right. At this time, we can appropriately lower the output power of the motor on the left.

#### 9. Compass Angle compensation

This is the use of Angle compensation when the compass Angle is not accurate when debugging software, the latest software has automatic compass compensation function, under normal circumstances to keep closed. If you need to adjust, please consult your service provider.

#### 10. Automatic mode option

We can set the automatic mode of navigation for the boat, There are 3 options in "auto Mode Options" on the Advanced Settings menu.

When we choose "navigation", when we navigate, the boat will stop after reaching the target point, and the task ends.


When we select "Navi+Bait", the boat will automatically release Bait when it reaches the target point during navigation, and then return to point H, the task is over.

When we select "Navi+Hook", the Hook will be automatically released when the boat reaches the target, and then return to point H, the task is over.

When we select "Navi+Bait+Hook", when the boat reaches the target point during navigation, it will automatically release the Bait, then release the Hook, and finally return to point H, the task is over. point during navigation, and then it will return to point H, and the task ends.

#### 11. factory data reset


On the home page, long press the center button of the remote lever to clear all Settings in the remote control and restore to the factory setting state.

**Warning:**  Keep the boat close to you when you do this ! Once this is done, the remote and the boat are disconnected and the channels need to be re-matched.

## 6. Security measures


### 1. Automatic return in low-power situation:

When the hull is low in battery power, the buzzer of the remote controller will sound an alarm and automatically return to the departure point;

**Warning:**  Keep the boat close to you when you do this, Once this is done, the remote and the boat are disconnected and the channels need to be re-matched.

### 2. Automatic return with no signal :

When the connection signal between the hull and the remote control is lost, the buzzer of the remote controller will sound an alarm and automatically return after 30 seconds. When returning to the remote control to the active area, the return will stop. You can operate the hull by means of a remote control;

**Note:**  The above operation is required to set the H point on the navigation page.

### 3. Circuit protection measures

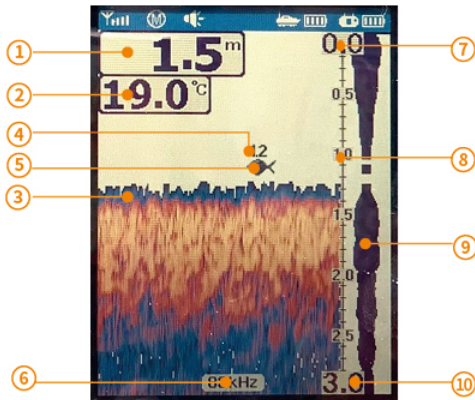
When the current in the circuit increases due to the propeller winding debris or the motor failure, the system will automatically cut off the output current of the motor, and power again after 10 seconds, so as to protect the circuit board from being burned due to the current increase. At the same time, the circuit has the design of fuse, so as to achieve the double protection of the circuit board.

# 7. Fish Finder

## 1. How Sonar Works

Sonar technology is based on sound waves. The system uses sonar to locate and define structure, bottom contour and composition, as well as depth directly below the transducer. The transducer sends a sound wave signal and determines distance by measuring the time between the transmission of the sound wave and when the sound wave is reflected off an object; then it uses the reflected signal to interpret location, size, and composition of an object.

## 2. Display View



1. Water Depth
2. Water Temperature
3. Bottom Contour
4. Fish Depth
5. Fish Icon
6. Sonar Frequency
7. Lower Limit
8. Depth Scale
9. Upper Limit
10. DTS single

## 3. How to set up sonar menu

The “setting” button is used to access the menu system. When you press the “setting” button once, the menu system immediately appears on the display. The menu system has 3 tabs: “Setup” and “Advance”, “Sonar”. You can press the “setting” button to switch between different menu tabs.

In each menu tab use the lower or Upper Key of rocker to select a specific menu item, and use the Left or Right Key of rocker to change a menu setting, then press the Power button to return to the homepage

### A) Sonar Sensitivity

Settings: “Auto”, “1%” to “100%” Sensitivity controls the unit’s ability to pick up echoes. If you want to see more detail, try increasing the sensitivity, a little at a time. There are situations when too much clutter appears on the screen. Decreasing the sensitivity can reduce the clutter and show the strongest fish echoes if fish are present. As you change the sensitivity setting you can see the difference on the chart as it scrolls. Select “Auto” to have the unit automatically select the sensitivity according to the different water depths.

### B) Depth Range

Settings: “Auto”, “0-9ft” to “0-240ft” (“0-3m” to “0-80m”) Select “Auto” to have the unit automatically select the Depth Range, the bottom signal is automatically placed in the lower half of the screen. Select specific value to lock the depth range to a specific setting.

**Note:** In manual operation, if the depth is greater than the depth range setting, the bottom will not be visible on screen. You can select “Auto” to return to automatic operation.

### C) Fish Symbols & Depth

Settings: **"On/On"**, **"On/Off"**, **"Off/Off"** This feature identifies targets that meet certain conditions as fish. The microcomputer analyzes all echoes and eliminates surface clutter, thermoclines, and other undesirable signals. In most instances, remaining targets are fish. This feature displays fish symbols on the screen in place of the actual fish echoes. There are several fish symbol sizes. These are used to designate the relative size between targets.

**Note:** ⓘ The sonar's microcomputer is sophisticated, but it can be fooled. It can't distinguish between fish and other suspended objects such as trotlines, turtles, submerged floats, air bubbles, etc.

#### D) Depth Cursor

Settings: **"On"**, **"Off"** The depth cursor consists of a horizontal line with a digital depth box on the right side. The numbers inside the box show the depth of the cursor. You can move the cursor to any location on the screen, letting you pinpoint the depth of a target.

#### E) Simulator

Settings: **"On"**, **"Off"** The Simulator is a very powerful tool that simulates on the water operation. Use the Simulator to learn how to use your fish finder before taking your boat on the water. The Simulator Indicator will be visible on screen when Simulator is set to **"On"**.

#### F) Units

Settings: **"ft/° C"**, **"ft/° F"**, **"m/° C"**, **"m/° F"**

#### G) Chart Speed

Settings: **"10%"** to **"100%"**

The chart speed is the rate echoes scroll across the screen.

#### H) Keel Offset

Settings: **"Off"**, **"-9ft"** to **"+9ft"** (**"-3m"** to **"+3m"**) Keel Offset will adjust the digital depth readout to indicate depth from the waterline or boat's keel. Enter a positive vertical measurement from the transducer to the waterline to read the depth from the waterline. Enter a negative vertical measurement from the transducer to keel to read the depth from the keel.

#### I) Sonar Chart Mode

Settings: **"White Background"**, **"Blue Background"**, **"Gray Scale"**  
You can change the Sonar Chart Mode to suit your viewing preferences.

#### J) Surface Clarity

Settings: **"Off"**, **"High"**, **"Medium"**, **"Low"** Surface Clarity adjusts the filter that removes surface clutter noise caused by algae and aeration. The lower the setting, the more surface clutter will be displayed.

#### K) Noise Rejection

Settings: **"Off"**, **"High"**, **"Medium"**, **"Low"** The Noise Rejection system built into the sonar unit constantly evaluates the effects of boat speed, water conditions and interference. This automatic feature gives you the best display possible under most conditions. If you have high noise levels, try using the **"High"** setting. However, if you are having trouble with noise, we suggest that you take steps to find the interference source and fix it, rather than continually using the unit on the high setting.



## 8. Precautions

1. In order to use safety, do not use a non-original power battery, do not use a non-original charger to charge the remote control or the boat battery;
2. When charging the battery, please do not carry it in a closed room. Do not charge in a humid environment. Do not place flammable or explosive materials near the battery. Do not cover the battery being charged with other items.
3. Do not expose the battery to high temperature for a long time; it is strictly forbidden to drop, smash, and puncture the battery with metal sharp objects. It is strictly forbidden to put the battery in fire or water; if the battery accidentally falls into the water, it is strictly forbidden to use this battery;
4. If the bail boat is not used for a long time, the battery compartment battery should be taken out and stored, the debris on the propeller should be removed, and the hull should be kept dry and stored.
5. When using the bail boat for the first time or re-using the long-unused boat, it is necessary to calibrate the compass to ensure the accuracy of the hull driving direction;
6. It is forbidden to use propellers of other sizes without permission, which will result in circuit burnout;
7. If you use the wrong Settings, the boat may not work properly, or the Fish Finder will not display the Fish condition properly. In this case, you can press the **"confirm"** button in the center of the joystick on the home page to restore factory Settings.

## 9. Troubleshoot common faults;


Please check the following steps before reporting the breakdown.

No.	Symptom	Possible cause	Solution
1	The remote control cannot be turned on	The battery is dead	Charge the remote control.
2	The remote control has no signal	The antenna is not connected.	Check if the boat antenna is connected.
		There is no matching channel with the boat	Rematch the channel
3	Unable to navigate	Near channel is interfering	Go to the settings menu and reselect a channel to match
		The target point is too close to the current point	Reset target point
4	Fish finder does not display properly	Compass point is incorrect	Recalibrate the compass
		There is a reflector at the bottom of the water, or the water depth is too shallow.	Drive the boat to the deep side of the water
5	A deviation in the direction of the boat head	No calibration of the compass	Calibrate compass
6	Navigation or automatic driving goes a arc line	No calibration of the compass	Calibrate compass
7	The sonar fish screen is not displaying properly, or the sonar signal is very weak	Sonar sensitivity Settings are too high	In the Settings menu, reduce the sonar sensitivity to 60% or less
		The sonar refresh speed setting is too high	In the Settings menu, reduce the "chart speed" to 60% or less
8	Sonar fish finder interface is not displayed	Even if the distance is very close, there is no display, so there is probably a similar frequency interference nearby	In the Settings menu, select "sonar channel" and select a channel to re-match the frequency

## 10. Technical Indicators of Products

Boat		
Material	ABS+PC	
Hull size:	679mm×439mm×258mm	
Hull weight (excl.battery)	5.8KG	
Battery weight(12V6AH Lead acid battery×2)	3.8KG	
Battery weight(11.1V10AH Lithium battery×2)	1.34KG	
Battery weight(11.1V20AH Lithium battery×2)	1.66KG	
Hull type	Twin-hull, twin-propelle,twin-engine	
Lithium ion battery	Standard11.1 /10AH×2, Optional20AH×2	
Bait hopper Qty	2	
Bait Hopper Capacity	3kg	
Hook qty	2	
Hopper control mode	Reducer	
Driving mode	Dual motor drive, Brush motor	
Sailing Speed	50m-70m/min Adjustable	
Working time	boat(By 5AH×2 Battery)	1.5hours
	boat(By 10AH×2 Battery)	3 hours (Standard 10AH)
	boat(By 20AH×2 Battery)	5 hours
	Remote control	8-10hours
Turning Radius	0.5M	

All in One Remote Control	
Remote control size	200mm*136mm*46mm
Remote control weight	480g
Display specification	3.5" 18 bit TFT Color display V320xH240 with white LED front light, Superb viewing in direct at sun
Radio Frequency	868MHZ,
Distance of remote control	500m
Distance of Sonar signal transmission	400m
Battery capacity	8000mAH
Satellite Positioning System	
Satellite positioning system	GPS/Beidou/Glonass/Galileo Navigation Satellite System
Positioning accuracy	< 2M
Time to capture satellite	< 1min
Locations storage number	32 point
GPS Navigation Driving	yes
Automatic cruising	yes
Fish Finder System	
Sonar transducer frequency	200KHz&83KHz duel beam sonar frequency
Sonar angle	83KHz: ∠ 60°, 200KHz: ∠ 20°
Water depth accuracy	0.1m
Water depth range	0.6m-80m

**Note:**  Due to the continuous improvement of products, this product in this file is subject to the actual product, and our company has the right to reserve product updates.



More Intelligent bait boat Star Here!